



Designed and made by Sally Ablett - quilt 1

Size 58" x 72"



Main Diagram

Requirements

Fabrics from the **Enchanted** collection

1. A546.1 - Fantastic fungi on smokey blue - $\frac{1}{2}$ yd - $\frac{1}{2}$ mtr
2. A543.1 - Unicorn on pink with gold metallic - $\frac{3}{8}$ yd - 40cm
3. A545.2 - Feathers and stars on grey with silver metallic $\frac{1}{2}$ yd - $\frac{1}{2}$ mtr
4. A547.3 - Enchanted owl on midnight with gold metallic - $\frac{3}{8}$ yd - 40cm
5. A545.1 - Feathers and stars on cream with copper metallic - $\frac{1}{2}$ yd -
6. A547.1 - Enchanted owl on pink with copper metallic - $\frac{3}{8}$ yd - 40cm
7. A546.2 - Fantastic fungi on green - $\frac{1}{2}$ yd - $\frac{1}{2}$ mtr
8. A543.3 - Unicorn on teal with copper metallic - $\frac{3}{8}$ yd - 40cm
9. A544.1 - Enchanted flowers on grey with gold metallic - $\frac{3}{4}$ yd - $\frac{3}{4}$ mtr
10. A544.3 - Enchanted flowers on dark teal with copper metallic $\frac{3}{4}$ yd - $\frac{3}{4}$ mtr
11. BB266 - Enchanted pink - $\frac{3}{4}$ yd - $\frac{3}{4}$ mtr

Wadding and backing 62" x 76"

All measurements include $\frac{1}{4}$ " seam allowances; press each seam as you go.

Cutting



45 ° angle from the bottom left corner **45 ° angle from top right corner**

From fabric 1 cut

10 x 2 $\frac{1}{2}$ " x 6 $\frac{7}{8}$ " cut a 45 ° angle from the bottom left-hand corner (block 1)

10 x 2 $\frac{1}{2}$ " x 4 $\frac{7}{8}$ " cut a 45 ° angle from top right corner (block 1)

From fabric 2 cut

20 x 4 $\frac{1}{2}$ " x 4 $\frac{1}{2}$ " (block 1)

From fabric 3 cut

10 x 2 $\frac{1}{2}$ " x 6 $\frac{7}{8}$ " cut a 45 ° angle from top right corner (block 1)

10 x 2 $\frac{1}{2}$ " x 4 $\frac{7}{8}$ " cut a 45° angle from bottom left corner (block 1)

From fabric 4 cut

20 x 4 $\frac{1}{2}$ " x 4 $\frac{1}{2}$ " (block 1)

From fabric 5 cut

10 x 2 $\frac{1}{2}$ " x 6 $\frac{7}{8}$ " cut a 45 ° angle from the bottom left-hand corner (block 2)

10 x 2 $\frac{1}{2}$ " x 4 $\frac{7}{8}$ " cut a 45 ° angle from top right corner (block 2)

From fabric 6 cut

20 x 4½" x 4½" (block 2)

From fabric 7 cut

10 x 2½" x 6⅞" cut a 45° angle from top right corner (block 2)

10 x 2½" x 4⅞" cut a 45° angle from bottom left corner (block 2)

From fabric 8 cut

20 x 4½" x 4½" (block 2)

From fabric 9 cut

3 x 2½" x 16½" (sashing for rows 1 at the beginning of row, 3 at the end of row and at the end of row 9)

9 x 2½" x 14½" (sashing)

12 x 2½" x 12½" (sashing for in between the blocks rows)

1 x 2½" x 2½" (for end of row 9. Right hand side)

From fabric 10 cut

1 x 2½" x 16½" (at the end of sashing in row 5)

12 x 2½" x 14½" (sashing)

13 x 2½" x 12½" (sashing for in between the blocks rows)

1 x 2½" x 2½" (bottom right corner in the last row)

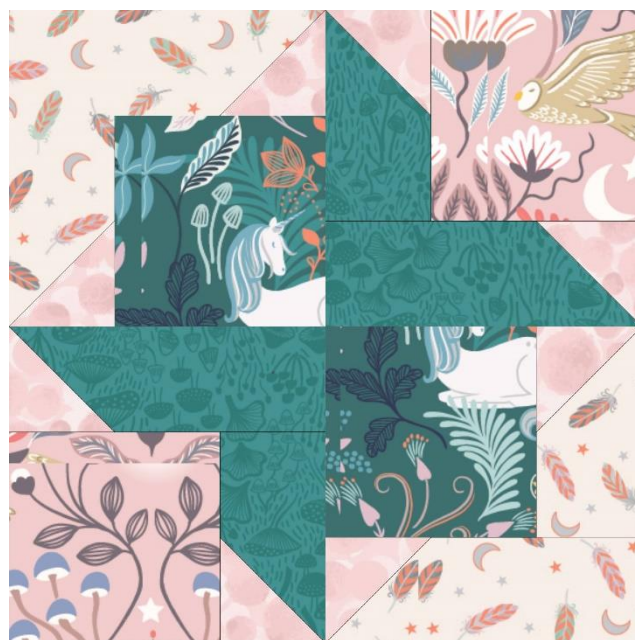
From fabric 11

80 x 2⅞" x 2⅞" cut in half diagonally once (for both blocks)

Making up the blocks



Block 1



Block 2

Both blocks are made up in the same way. Lay out the fabric pieces for block 1



Top left corner of block



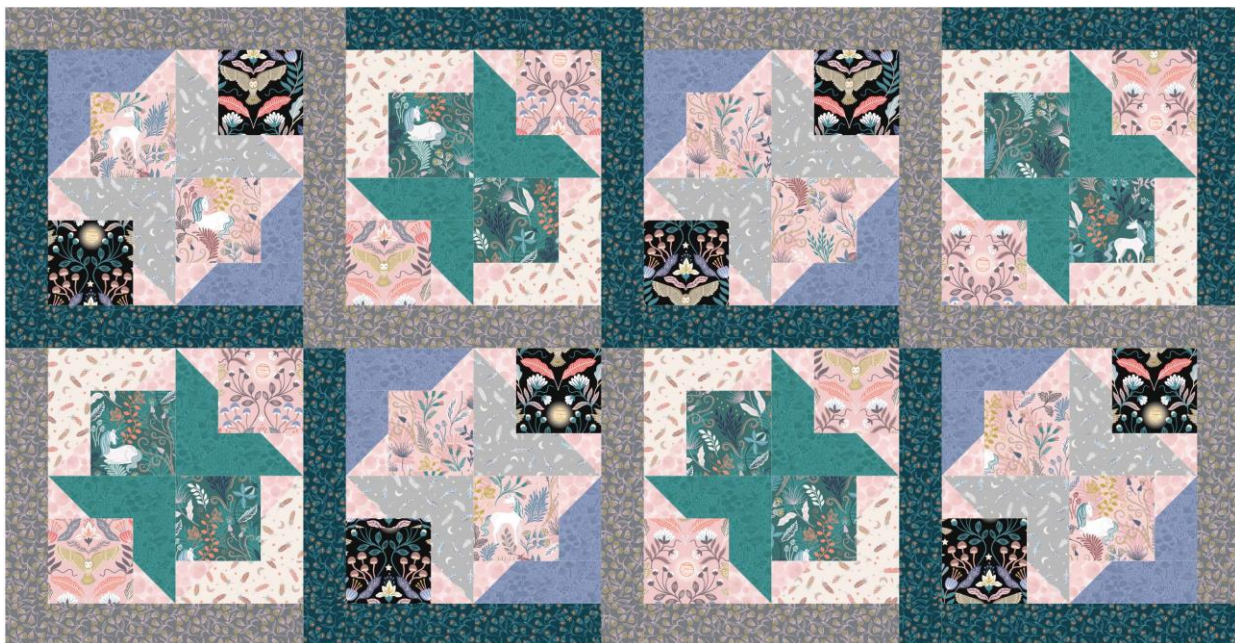
top right corner of block

Sew the small triangles to each end of the strip pieces. Next stitch the short strip to the square and press back. Sew the other strip to the block.



Do this to all four blocks. Now stitch in rows and then sew them together to complete the block. Sew 10 of block 1 in total and 10 of block 2.

Completing the quilt top



Lay out the sashing pieces for row 1, starting with the 2½" x 16½" strip. Next three will be the strips 2½" x 14½".

Rows 2, 4, 6, 8 and 10 will be sashing strips $2\frac{1}{2}$ " x $12\frac{1}{2}$ " and your blocks.

Rows 3, 5 and 7 back to sashing strips, on this one the last strip will be a $2\frac{1}{2}$ " x $16\frac{1}{2}$ ". The other three are $2\frac{1}{2}$ " x $14\frac{1}{2}$ ".

Rows 9 and 11 sashing strips $2\frac{1}{2}$ " x $14\frac{1}{2}$ " and at the end of each row a $2\frac{1}{2}$ " x $2\frac{1}{2}$ "

Square at the end.

Stitch your rows together pressing the seams in the opposite way each time as this will help when sewing the rows together.

Quilting

Sandwich quilt top, wadding and backing together. Quilt by hand or machine as desired. Trim backing and wadding to size of quilt.

Binding

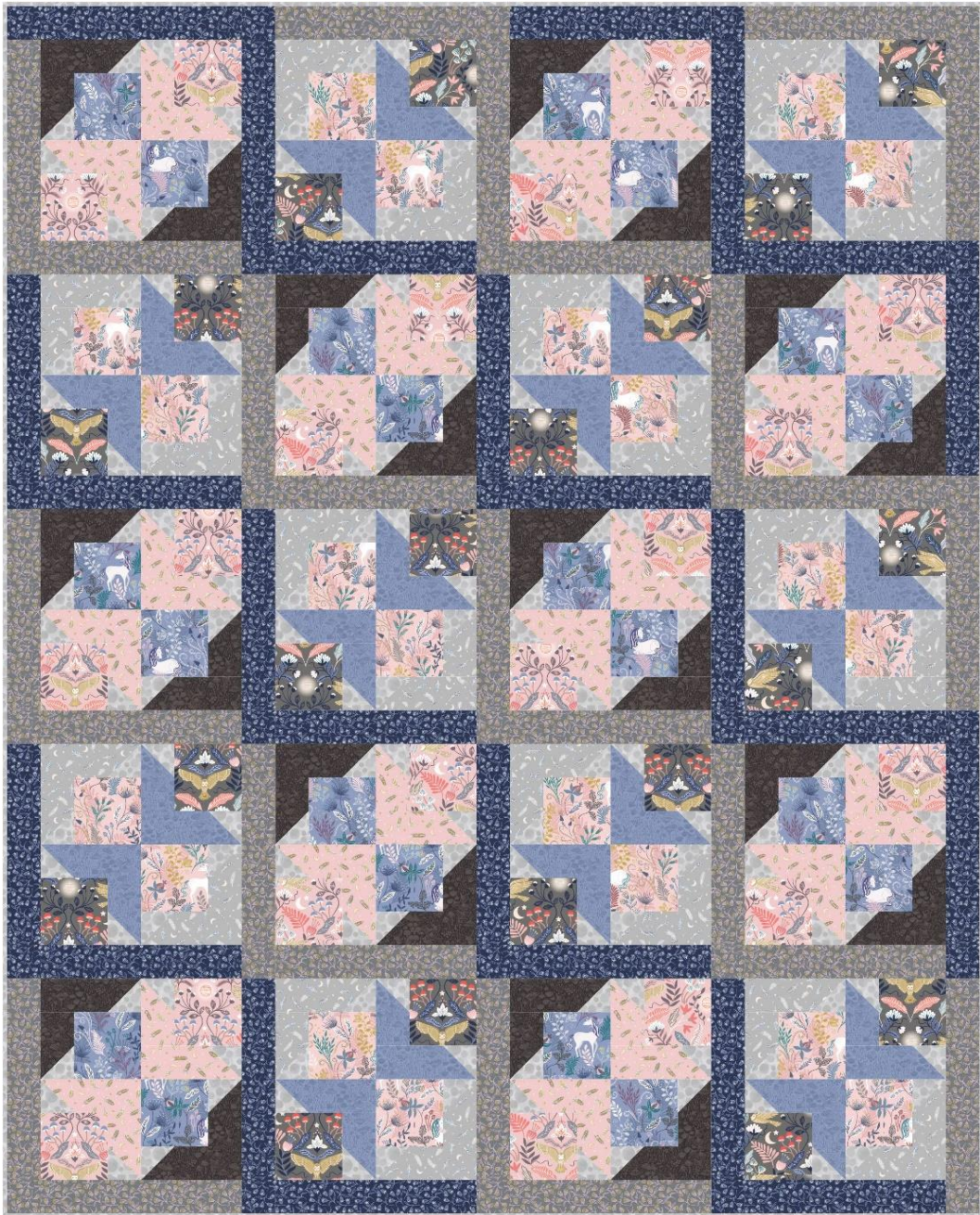
Use your favourite method from fabric 11 to bind the quilt.

Sally Ablett 2021 ©



Designed and made by Sally Ablett - quilt 2

Size 58" x 72"



Main Diagram

Requirements

Fabrics from the **Enchanted** collection

1. A546.3 - Fantastic fungi on midnight - $\frac{1}{2}$ yd - $\frac{1}{2}$ mtr
2. A543.2 - Unicorn on smokey blue with silver metallic - $\frac{3}{8}$ yd - 40cm
3. A545.3 - Feathers and stars on pink with gold metallic - $\frac{1}{2}$ yd
4. A547.1 - Enchanted owl on pink with copper metallic - $\frac{3}{8}$ yd - 40cm
5. A545.2 - Feathers and stars on grey with silver metallic - $\frac{1}{2}$ yd
6. A547.2 - Enchanted owl on dark grey with silver metallic - $\frac{3}{8}$ yd - 40cm
7. A546.1 - Fantastic fungi on smokey blue - $\frac{1}{2}$ yd
8. A543.1 - Unicorn on pink with gold metallic - $\frac{3}{8}$ yd - 40 cm
9. A544.2 - Enchanted flowers on dark blue with silver metallic $\frac{3}{4}$ yd - $\frac{3}{4}$ mtr
10. A544.1 - Enchanted flowers on grey with gold metallic $\frac{3}{4}$ yd - $\frac{3}{4}$ mtr
11. BB149 - Silver - $\frac{3}{4}$ yd - $\frac{3}{4}$ mtr

Wadding and backing 62" x 76"

All measurements include $\frac{1}{4}$ " seam allowances; press each seam as you go.

Cutting



45 ° angle from the bottom left corner **45 ° angle from top right corner**

From fabric 1 cut

10 x 2 $\frac{1}{2}$ " x 6 $\frac{7}{8}$ " cut a 45 ° angle from the bottom left-hand corner (block 1)

10 x 2 $\frac{1}{2}$ " x 4 $\frac{7}{8}$ " cut a 45 ° angle from top right corner (block 1)

From fabric 2 cut

20 x 4 $\frac{1}{2}$ " x 4 $\frac{1}{2}$ " (block 1)

From fabric 3 cut

10 x 2 $\frac{1}{2}$ " x 6 $\frac{7}{8}$ " cut a 45 ° angle from top right corner (block 1)

10 x 2 $\frac{1}{2}$ " x 4 $\frac{7}{8}$ " cut a 45° angle from bottom left corner (block 1)

From fabric 4 cut

20 x 4 $\frac{1}{2}$ " x 4 $\frac{1}{2}$ " (block 1)

From fabric 5 cut

10 x 2 $\frac{1}{2}$ " x 6 $\frac{7}{8}$ " cut a 45 ° angle from the bottom left-hand corner (block 2)

10 x 2½" x 4⅞" cut a 45 ° angle from top right corner (block 2)

From fabric 6 cut

20 x 4½" x 4½" (block 2)

From fabric 7 cut

10 x 2½" x 6⅞" cut a 45 ° angle from top right corner (block 2)

10 x 2½" x 4⅞" cut a 45° angle from bottom left corner (block 2)

From fabric 8 cut

20 x 4½" x 4½" (block 2)

From fabric 9 cut

3 x 2½" x 16½" (sashing for rows 1 at the beginning of row, 3 at the end of row and at the end of row 9)

9 x 2½" x 14½" (sashing)

12 x 2½" x 12½" (sashing for in between the blocks rows)

1 x 2½" x 2½" (for end of row 9. Right hand side)

From fabric 10 cut

1 x 2½" x 16½" (at the end of sashing in row 5)

12 x 2½" x 14½" (sashing)

13 x 2½" x 12½" (sashing for in between the blocks rows)

1 x 2½" x 2½" (bottom right corner in the last row)

From fabric 11

80 x 2⅞" x 2⅞" cut in half diagonally once (for both blocks)

Making up the blocks



Block 1

Block 2

Both blocks are made up in the same way. Lay out the fabric pieces for block 1



Top left corner of block



top right corner of block

Sew the small triangles to each end of the strip pieces. Next stitch the short strip to the square and press back. Sew the other strip to the block.



Do this to all four blocks. Now stitch in rows and then sew them together to complete the block. Sew 10 of block 1 in total and 10 of block 2.

Completing the quilt top



Lay out the sashing pieces for row 1, starting with the $2\frac{1}{2}$ " x $16\frac{1}{2}$ " strip. Next three will be the strips $2\frac{1}{2}$ " x $14\frac{1}{2}$ ".

Rows 2, 4, 6, 8 and 10 will be sashing strips $2\frac{1}{2}$ " x $12\frac{1}{2}$ " and your blocks.

Rows 3, 5 and 7 back to sashing strips, on this one the last strip will be a $2\frac{1}{2}$ " x $16\frac{1}{2}$ ". The other three are $2\frac{1}{2}$ " x $14\frac{1}{2}$ ".

Rows 9 and 11 sashing strips $2\frac{1}{2}$ " x $14\frac{1}{2}$ " and at the end of each row a $2\frac{1}{2}$ " x $2\frac{1}{2}$ " Square at the end.

Stitch your rows together pressing the seams in the opposite way each time as this will help when sewing the rows together.

Quilting

Sandwich quilt top, wadding and backing together. Quilt by hand or machine as desired. Trim backing and wadding to size of quilt.

Binding

Use your favourite method from fabric 11 to bind the quilt.

